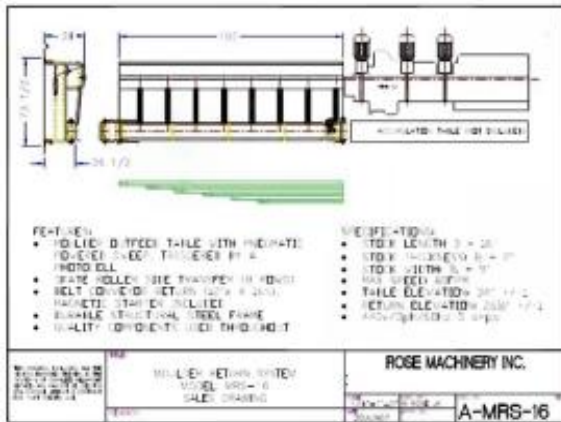




Machinery for the Woodworking, Stone,  
Glass, Plastic, and Metalworking Industries



Date : 05/12/2025 - 11:23 PM \*  
EXF # : MA-010057  
Category : MATL. HANDLING-AUTOMATION  
Brand / Model : MATH-EX "A-MRS-16"  
Machine Type : AUTOMATIC RETURN CONVEYOR  
Year of Mfg. : 2025  
Condition : Brand New w/Warranty  
Elect / Voltage : 230 or 460 V, 60 Cy, 3 Ph  
Special Note :

FOB / Region : PACIFIC NORTHWEST

Appr. Repl. Cost. : \$ 15,000

Price : \$ 13,600 \*

Comment : You won't find a better return  
for less money - ga

Leasing : Lease for \$ 276/Mo. at NCL

\* Pricing is valid at the time of printing and subject to change at any time.

#### Description :

- **MATH-EX Model A-MRS-16 Automatic Return Conveyor:**

##### Specifications:

- Outfeed table with pneumatic powered sweep to return conveyor.
- 3' to 16' length x 1/2" to 2" thickness x 3/4" to 9" width capacities.
- Pneumatic sweep activated by a photocell; places stock on (8) row skate roller conveyor for side transfer to return belt.
- Return belt is 12" wide x 16'-1" long and operates at 80 FPM max.



Please ask me

**Marcus Johansson**  
800-374-5009 ext. 355  
Intl. +1 704-841-2001 ext. 355  
marcus.johansson@exfactory.com

**Sales - Liquidations - Auctions - Appraisals - Consulting**

**EX-FACTORY INC.:** 1805 Sardis Road North | Charlotte, NC 28270 USA | Ph +1 704.841.2001 | Fax 704.644.8068  
**Warehouse & Showroom:** 8191 Logistic Drive, Suite E | Zeeland, MI USA | Ph +1 616.772.1520 | Fax 704.644.8328



**Machinery for the Woodworking, Stone,  
Glass, Plastic, and Metalworking Industries**

---

- Outfeed table elevation is 34" +/- 1" and return conveyor elevation is 26-1/2 +/- 1".

**NOTE:**

- Includes magnetic motor starter (not wired); frame from durable structural steel; with quality components throughout.

---

**Sales - Liquidations - Auctions - Appraisals - Consulting**

**EX-FACTORY INC.:** 1805 Sardis Road North | Charlotte, NC 28270 USA | Ph +1 704.841.2001 | Fax 704.644.8068  
**Warehouse & Showroom:** 8191 Logistic Drive, Suite E | Zeeland, MI USA | Ph +1 616.772.1520 | Fax 704.644.8328