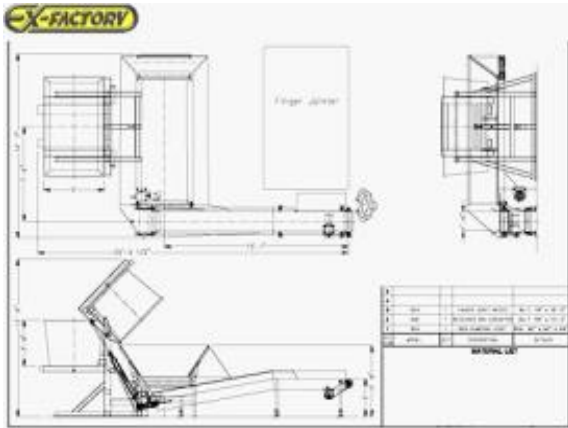




Machinery for the Woodworking, Stone,
Glass, Plastic, and Metalworking Industries



Date : 07/02/2025 - 11:49 PM *
EXF # : FJ-010466
Category : FINGER JOINTERS
Brand / Model : ROSE MACHINERY "BPDH/RBC/FJI"
Machine Type : BLOCK DELIVERY SYSTEM
Year of Mfg. : 2025
Condition : Brand New w/Warranty
Elect / Voltage : 240/480 V, 60 Cy, 3 Ph.
Special Note :

FOB / Region : PACIFIC NORTHWEST

Appr. Repl. Cost. : \$ 0

Price : \$ 0 *

Comment : Complete Fingerjointer Block
Infeed for under \$40,

Leasing : Call for Quote



Please ask me

Louis Sicotte
800-374-5009 ext. 329
Intl. +1 704-841-2001 ext. 329
louis.sicotte@exfactory.com

* Pricing is valid at the time of printing and subject to change at any time.

Description :

- Complete block feeding system for high capacity Fingerjointers, complete with Box Dumper, Receiving Bin Conveyor, and Transfer Conveyor to the Fingerjointer and consisting of the following items:
- Box Dumper: For dumping (1) load of fingerjoint blocks at a time. Hoist is fabricated from steel tubing with a box cradle that pivots at the top. The 3-sided cradle will hold the box or pallet when it is pivoted up to 135° to the final dumping position. A pair of replaceable forks hold pallets or boxes in place in the cradle. The cradle is pivoted by a hydraulic cylinder driven by a 3 HP hydraulic pump. The hydraulic cylinder is manually energized by the fingerjointer operator with foot switches.
- Scope of supply includes all mechanical equipment, electric powered hydraulic pump, and two foot switches. Wiring and controls by others. Cradle opening is 88" long X 48" wide X 50" high.
- Receiving Bin Conveyor: 48" Wide x 10' long conveyor bed reinforced to resist impact from material falling from dumped boxes; conveyor with 3' wide sides to contain dumped materials; powered with 1-1/2 HP gear motor at 15 FPM. Wiring and controls by buyer.
- Block Infeed Conveyor: Conveyor with 18" wide x 16' long bed; with sheeting from Receiving Bin and 6"

Sales - Liquidations - Auctions - Appraisals - Consulting

EX-FACTORY INC.: 1805 Sardis Road North | Charlotte, NC 28270 USA | Ph +1 704.841.2001 | Fax 704.644.8068
Warehouse & Showroom: 8191 Logistic Drive, Suite E | Zeeland, MI USA | Ph +1 616.772.1520 | Fax 704.644.8328



**Machinery for the Woodworking, Stone,
Glass, Plastic, and Metalworking Industries**

deep sides on Infeed Conveyor contain blocks when spilling from Bin to Conveyor; powered by 1-1/2 HP gear motor at 140 FPM. Wiring and controls by others.

- All equipment is new; fabricated frames and appropriate parts painted with (1) coat industrial grade Shady Lane Green enamel; guards and appropriate, moving parts painted Safety Orange.
- All gear motors, mechanical equipment, limit switches, sensors or photoelectric devices required are included and mounted. Pneumatic cylinders and devices and their air valves are supplied and mounted. Connecting hoses and fittings installed; Filter/Regulator units supplied, mounted and connected by hose to valves.
- Compressed air service to equipment by purchaser. Disconnects, motor starters, enclosures, transformers, PLC's, programming, electrical push button controls and emergency stop devices supplied and installed by purchaser.

Sales - Liquidations - Auctions - Appraisals - Consulting

EX-FACTORY INC.: 1805 Sardis Road North | Charlotte, NC 28270 USA | Ph +1 704.841.2001 | Fax 704.644.8068
Warehouse & Showroom: 8191 Logistic Drive, Suite E | Zeeland, MI USA | Ph +1 616.772.1520 | Fax 704.644.8328