

CAM-WOOD



RM-70



RM-80 Double Feed Rollers

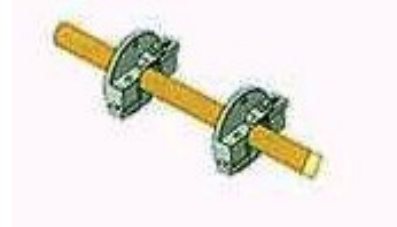
RM-70 3/8" – 2 3/8" Pole Milling Machine

RM-80 13/32" ~ 3-1/8" Pole Milling Machine

Features:

- The unit is designed solely for shaping of round poles in woodworking factory.
- The 4-stage speed feeding of square workpiece into cutting position by means of feed rollers may continuously push out shaped round poles fully automatic.
- The cutting head has been proven flawless through experience and study of many years.
- The unit cuts out perfectly round rod or stick, such as flag pole, rattan, acrylic molded board, carbon, Bakelite, bamboo and wood.
- A hand wheel is provided to adjust simply the feed rollers.
- Wood fragments and dust are cleared off from the unit thoroughly in coherence with spindles revolution.
- Cutting of each type and size of workpiece will be carried out by specific cutter head and rollers for finished products.
- Automatic feeding, one-piece cast iron base.
- High-efficiency industrial TEFC motor for powerful cutting.

SPECIFICATIONS	RM-70	RM-70-DH	RM-80
Working Size	3/8" ~ 2-3/8"	3/8" ~ 2-3/8"	13/32" ~ 3-1/8"
Working Length	12" ~ Unlimited	16" ~ Unlimited	12" ~ Unlimited
Motor of Main Cutter	5 HP	7.5 & 5 HP,	10 HP
Cutter Head Speed	3400 RPM	6000 RPM	6340 RPM
Feed Speed (4 Speed)	33/ 39/ 46/ 52 FPM	46/ 52/ 58/ 64 FPM	20 / 27/ 33/ 40 FPM
Feed Motor	2 HP	2 HP	2 HP
Total Knife	2 pcs	4 pcs	2 pcs
Dust Hood	4" x 1	4" x 2	4" x 1
Power	220 / 440V 3 PH	220 / 440V 3 PH	220 / 440V 3 PH
N.W.	770 LBS	1250 LBS	1150 LBS
G.W.	820 LBS	1400 LBS	1300 LBS



RM-70-DH 3/8" – 2 3/8" Dual Heads Pole Milling Machine

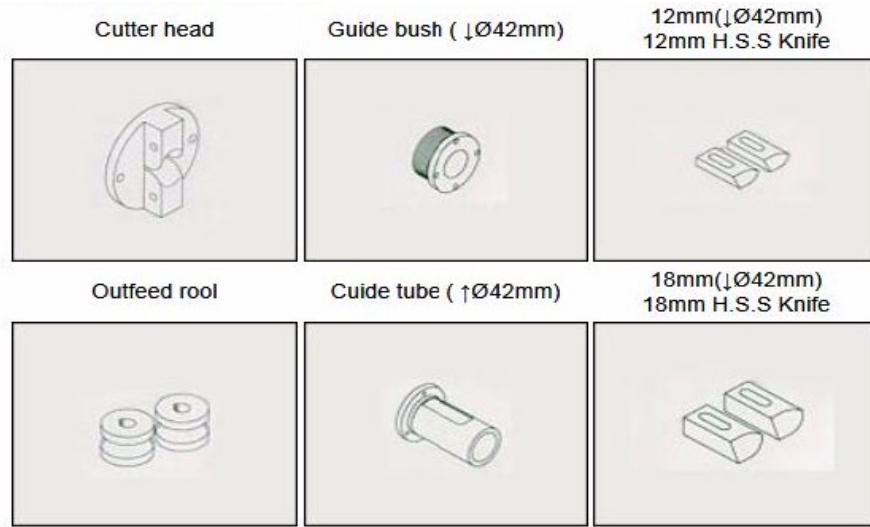
Options:

- RM-70CT CUTTERHEAD for each different size dowel (A, D, E in the picture)
- RM-70BD BLADES / KNIFES each sets (2 pcs) (B in the picture)

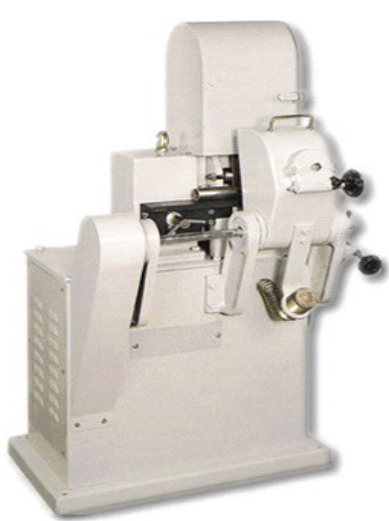
Features:

- Double Spindle Round Rod Milling Machine is designed for cutting stick from square into round rod, cutting stick up to 60 mm in diameter.
- Better than a single head machine, the RM-70S twin head machine offers smoother surface and saves finish time.
- Built with 2 cutter heads, provides coarse and finish cutting sequence in one pass.
- Excellent for making round rod with material such as wood, rattan, acrylic and similar materials.
- Four (4) cutting feed speeds to suit the various materials.
- Maximum safety is guaranteed by such features as feed rolls guard, fully enclosed transmission parts.
- Magnetic switch control.

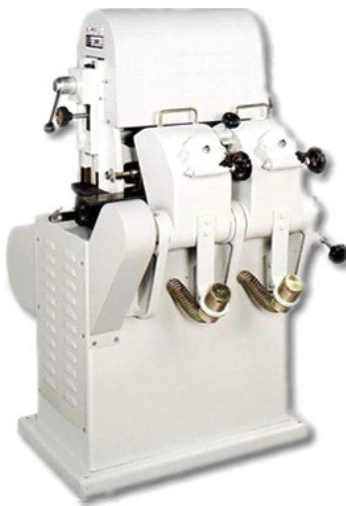
CAM-WOOD



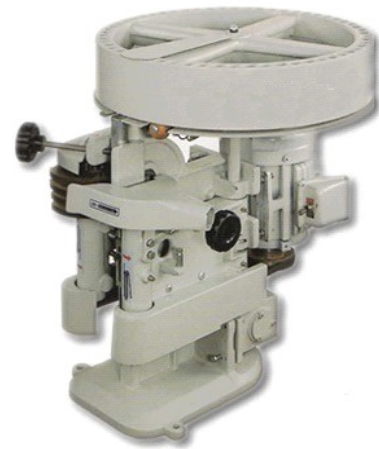
Optional Equipment



Single Head Round Pole Sander



Double Head Round Pole Sander



Dowel Cutting Machine



Auto Feed Magazine